

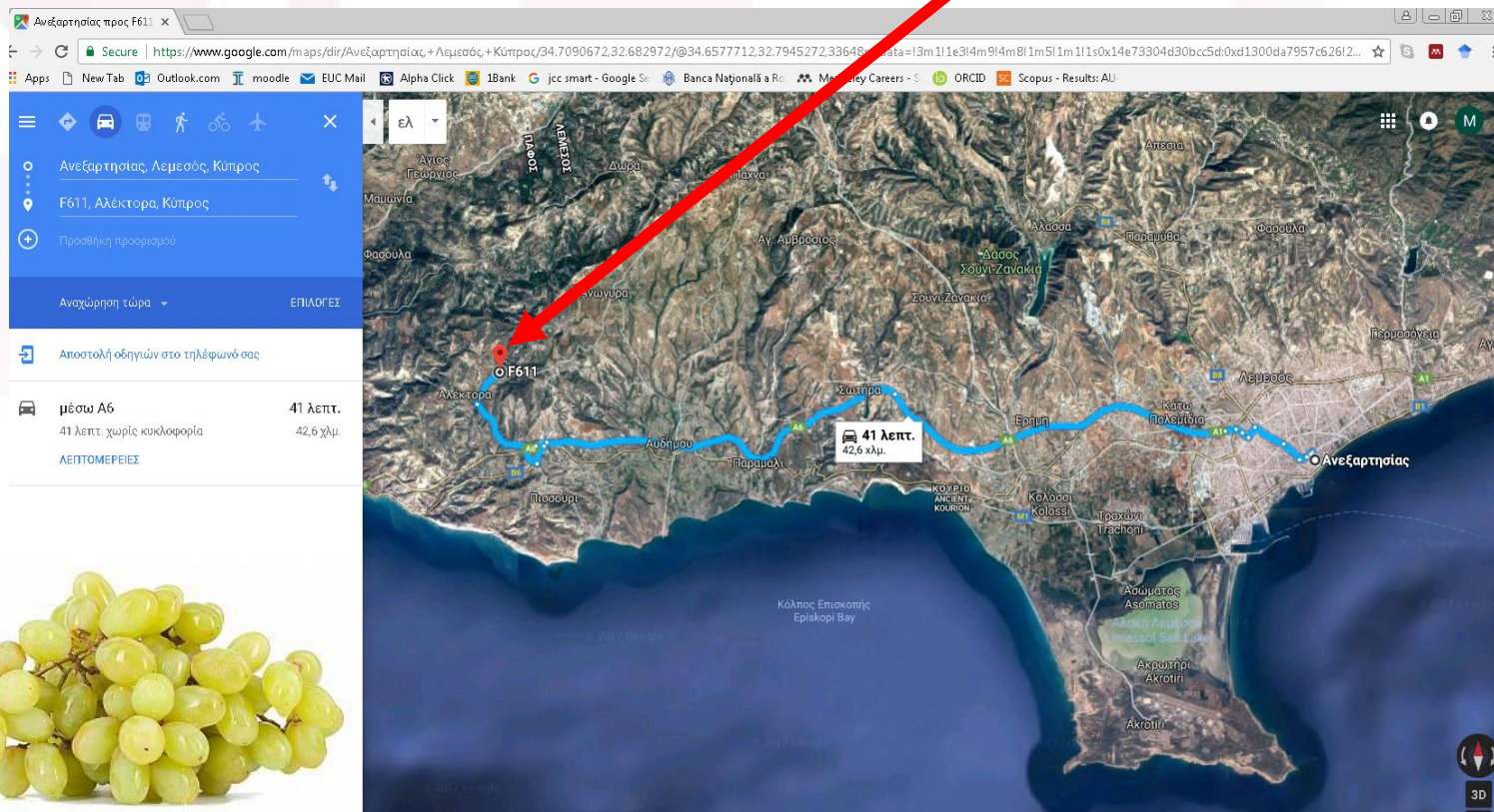
Organic production – Table grapes

Michalis Christoforou and Dimitris Tsaltas
Cyprus



New approaches for protection in a modern
sustainable viticulture: from nursery to harvesting

Exp. Field in Alectora



Ανεόρθησις προς F611

Secure | <https://www.google.com/maps/dir/Ανεόρθησις,+Λεμεσός,+Κύπρος/34.7090672,32.682972/@34.6577712,32.7945272,33648m/data=!3m1!1e3!4m9!4m8!1m5!1m1!1s0x14e73304d30bcc5d:0xd1300da7957c62612...>

Ανεόρθησις, Λεμεσός, Κύπρος

F611, Αλέκτορα, Κύπρος

Προσθήκη προορισμού

Αναχώρηση τώρα ΕΠΙΛΟΓΕΣ

Αποστολή οδηγιών στο τηλέφωνό σας

μέσω Α6 41 λεπτ.
41 λεπτ. χωρίς κυκλοφορία 42,6 χλμ.
ΛΕΠΤΟΜΕΡΕΙΕΣ

41 λεπτ.
42,6 χλμ.



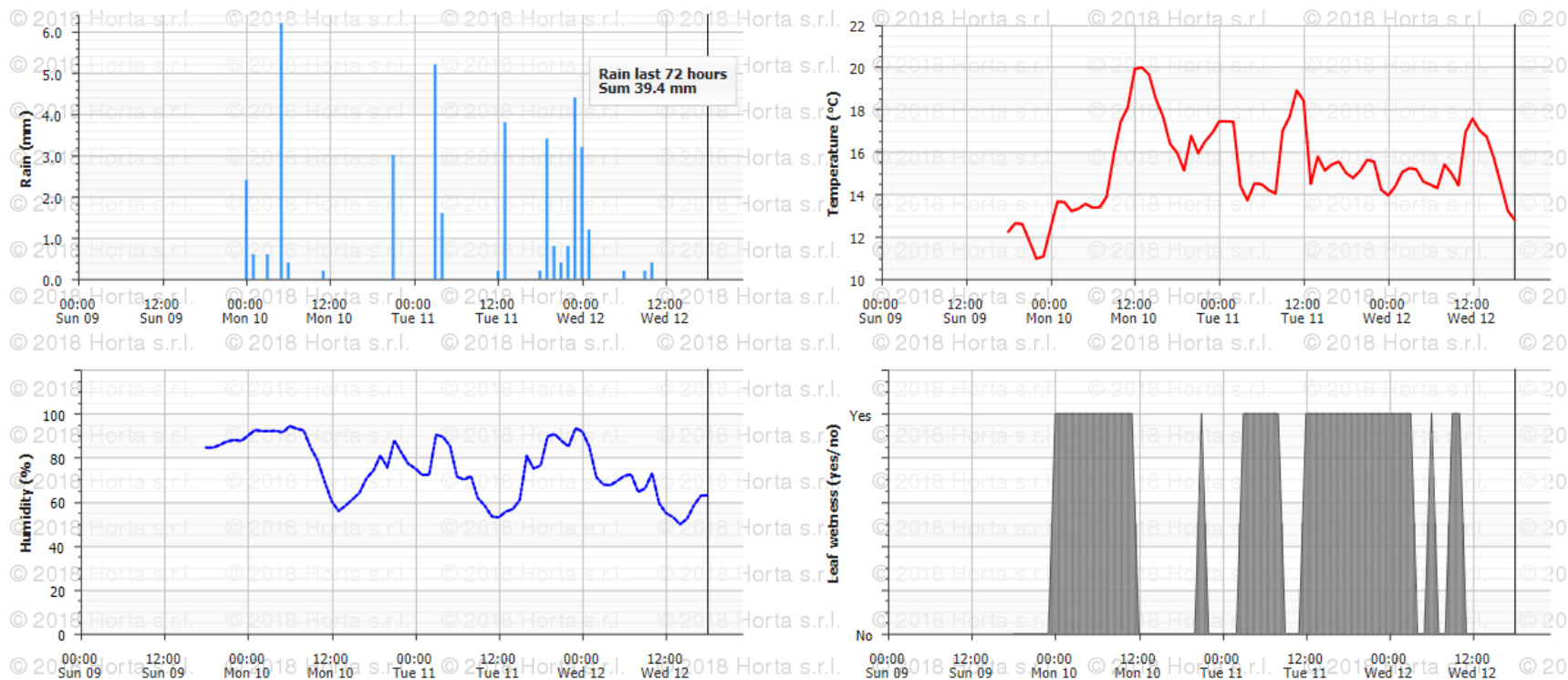
Sultanina grape seedless

Meteorological Station



Weather station [Cipro] Alektora

Current situation **Last 72 hours** Seasonal data Forecast data



PROGETTO LIFE16-ENV-IT-000566



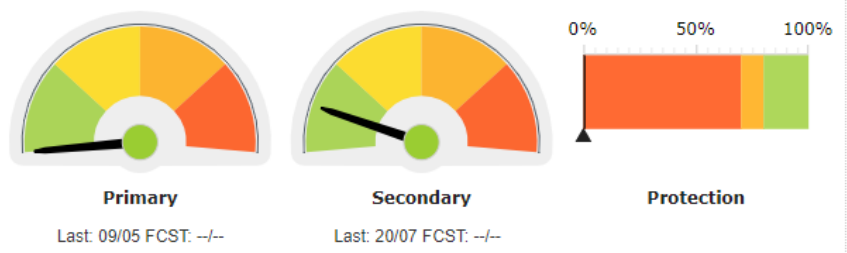
Plant development

Current stage: Ripening of berries



Diseases

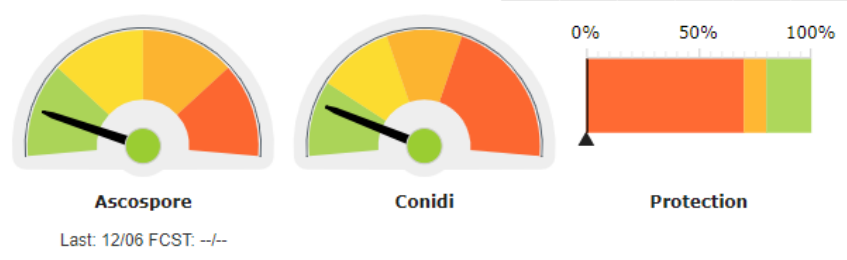
Downy mildew



Botrytis

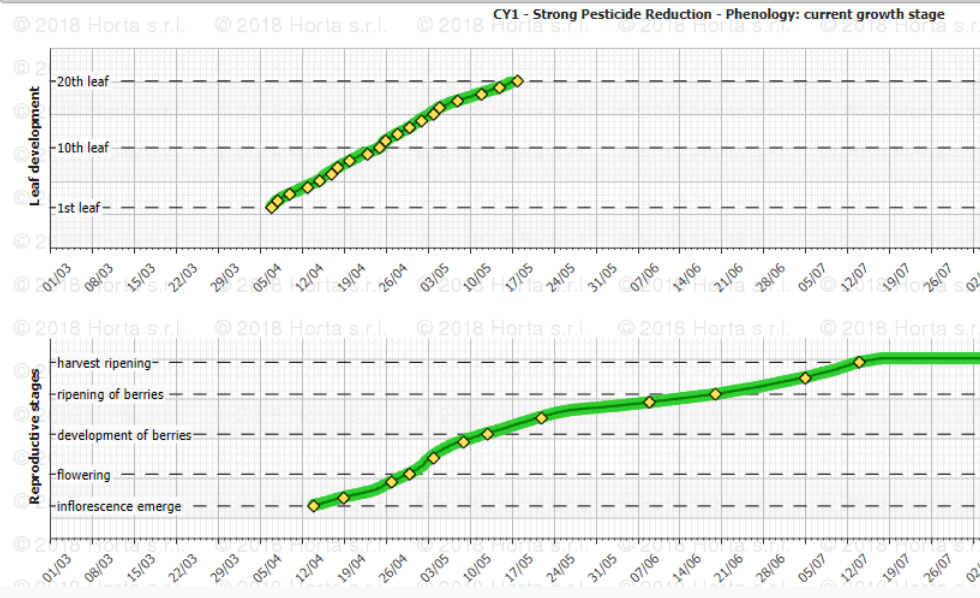


Powdery mildew



- <https://www.horta-srl.i>

Phenology: current growth stage



Field and Lab Observations

- Soil, leaves and roots microbiota and arthropods
- Disease and pest monitoring (macroscopic in the field and microscopic in the lab)
- Plant development (New leaves, Blooming seeding and ripening)
- Grape development, size, sugar/acid content, colour and turgidity.

Pest and Diseases



Plasmopara viticola



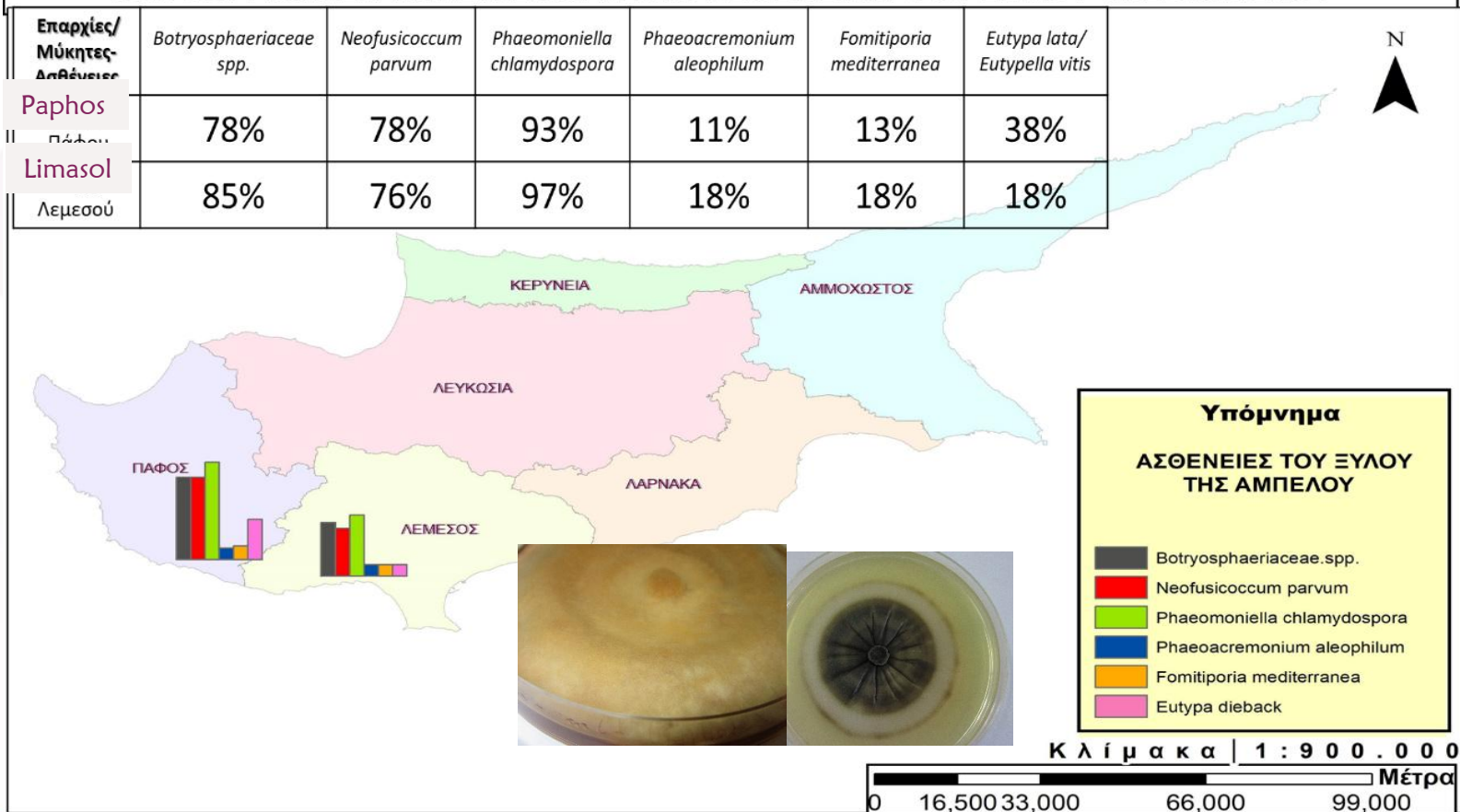
Coccide



Leafhopper larva

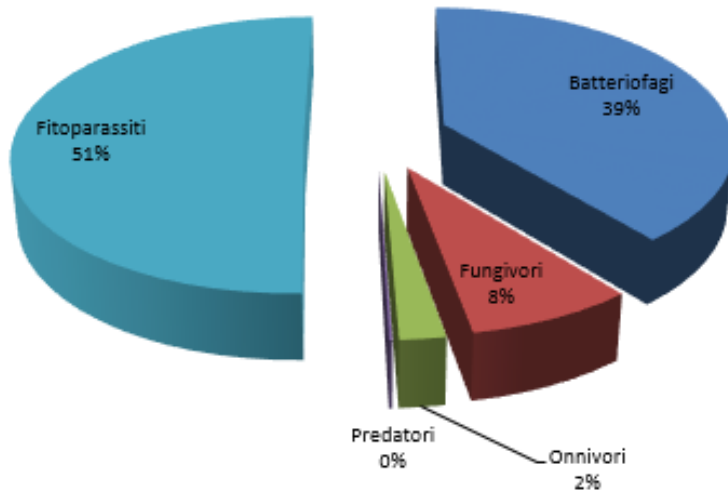
GTD distribution in Cyprus Vineyards

ΧΑΡΤΟΓΡΑΦΗΣΗ ΚΑΙ ΔΙΑΣΠΟΡΑ ΤΩΝ ΑΣΘΕΝΕΙΩΝ ΤΟΥ ΞΥΛΟΥ ΤΗΣ ΑΜΠΕΛΟΥ

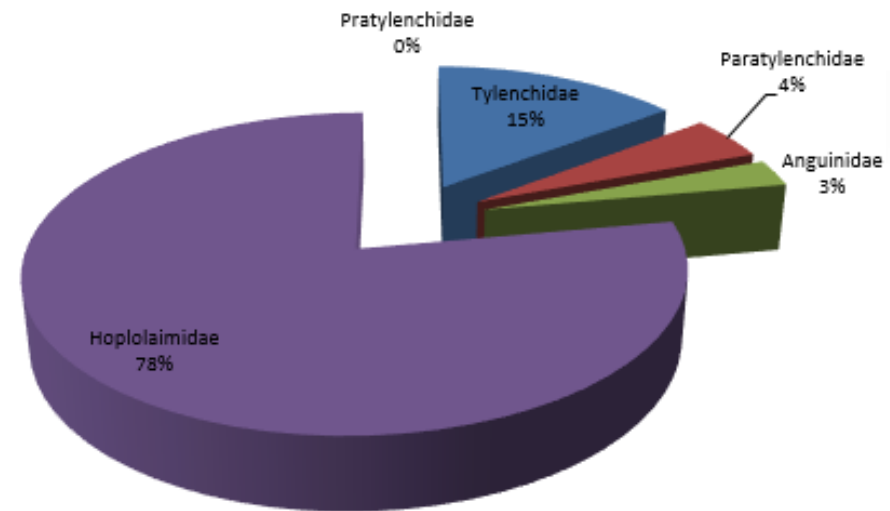


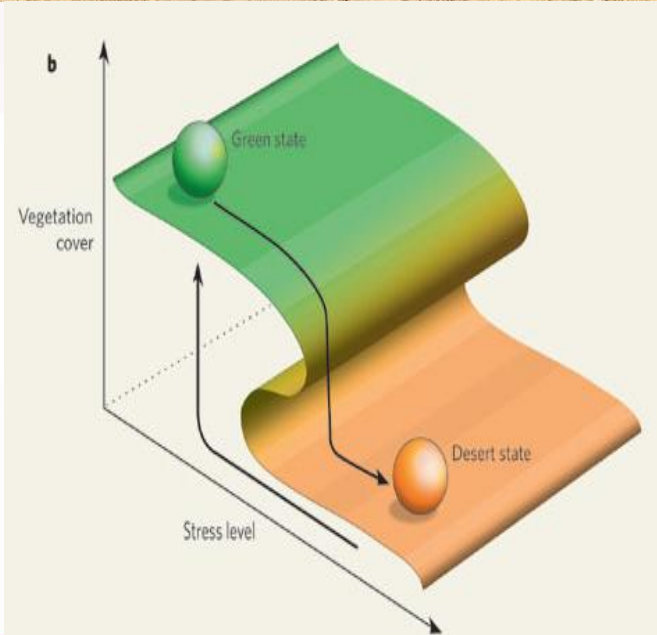
NEMATODES

CYPRUS



CYPRUS





Thank you

